

MediaTile Networking Options



SOLUTIONS

MediaTile Connectivity

MediaTile Digital Sign in a Box displays and media players support a wide variety of on-site connectivity options. From our popular cellular-broadband support to directly cabled Ethernet connections, MediaTile has a connectivity solution that will fit your on-site networking parameters as well as your operational, IT support and budgetary needs.

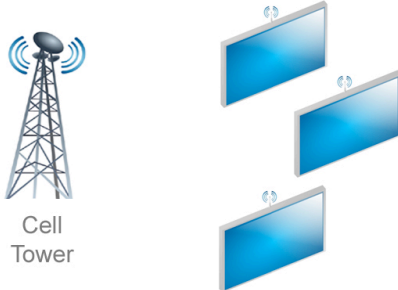
Digital Sign in a Box Networking Options

- | | |
|------------------|---|
| CELLULAR | Cellular broadband connectivity using the latest cellular technology including 3G EVDO and 4G*. Support for 1x services (non-broadband) is also included for locations where cellular broadband services are not yet available. (*not available in all markets/areas) |
| Wi-Fi | Wi-Fi based connectivity is supported using industry standard Wi-Fi routers and accompanying Wi-Fi enabled MediaTile displays. |
| ETHERNET | Support for virtually any on-site networking system that provides internet access including DSL, Cable DSL, LAN or WAN. MediaTile displays can be directly connected to the Ethernet access point, or can be used through a Wi-Fi router |
| SATELLITE | 2-way Satellite-based internet connectivity can be used with MediaTile systems. MediaTile displays can be directly connected to the satellite access point, or can be used through a Wi-Fi router. |

MediaTile Connectivity Options

The type of network connection you choose for your MediaTile digital signage solution is an important decision that has technology, IT support and financial implications. Because MediaTile supports a wide variety of connectivity options, you'll be able to choose the option that best fits your budget and the availability of IT support personnel to keep your network up and running. Following are just some of the configurations available to help you maximize your deployment ROI and ongoing operations.

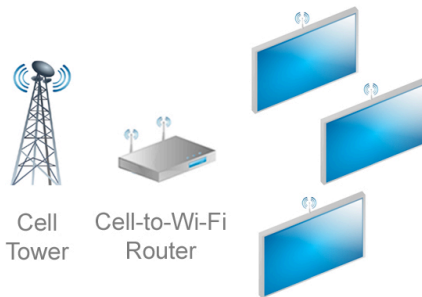
CELLULAR Connectivity



With integrated cellular broadband support, the need for any on-site networking gear, cabling, support or maintenance is completely eliminated. Each MediaTile display has integrated cellular broadband services (and 1x services) that connects with local cellular towers to get secure access to the internet.

- Easy deployment option with maximum flexibility; Ideal for sites that do not have pre-existing network or where a network cannot be easily, or affordably added or supported
- Each MediaTile display / player integrates cellular-networking hardware and service
- Cellular data service for each MediaTile display / player is required
- On-site networking (LAN/T1/DSL/Satellite) hardware and service is *not* required
- On-site cabling to each MediaTile display / player is *not* required

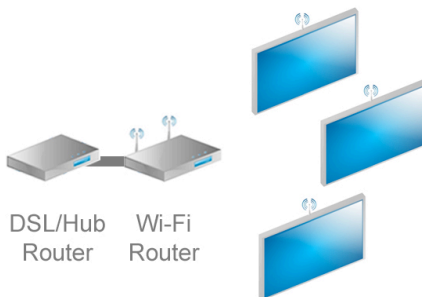
CELLULAR-to-Wi-Fi Connectivity



With Cellular-to-Wi-Fi support, each location uses a Cell-to-Wi-Fi bridge/router that communicates to displays using integrated Wi-Fi support. This hybrid alternative eliminates the need to add a Satellite, T1 or DSL network drop at each site, and eliminates the need to cable to each display.

- Ideal for sites that do not have a pre-existing network, or where one cannot be added and supported easily, and where multiple screens are in close proximity to support Wi-Fi
- Each MediaTile display / player integrates Wi-Fi connectivity support
- On-site Cell-to-Wi-Fi Router/Bridge is required (provides internet access)
- Cellular data service for each router is required
- On-site networking (LAN/T1/DSL/Satellite) hardware and service is *not* required
- On-site cabling to each MediaTile display / player is *not* required

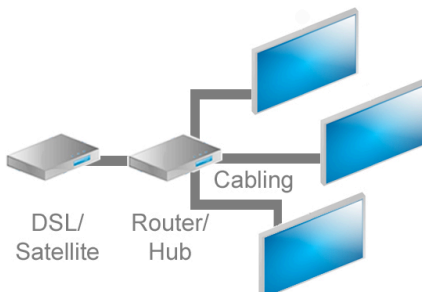
Wi-Fi Connectivity



With standard Wi-Fi support, an existing Satellite, T1, DSL or Local Area Network can be utilized to communicate with each Wi-Fi enabled display within a specific area or zone. Each display integrates the necessary Wi-Fi services that eliminate the need for any direct cabling.

- Ideal for sites that have a pre-existing network, or where a network can be added and supported easily
- Each MediaTile display / player integrates Wi-Fi connectivity support
- On-site networking (LAN/T1/DSL/Satellite) hardware and service is required
- On-site Wi-Fi Router is required
- On-site cabling to each MediaTile display / player is *not* required

DIRECT Connection



Use an existing Satellite, DSL or any other on-site network to directly connect to a MediaTile display or player using standard Ethernet cable from a Router or Hub.

- Ideal for sites that have a pre-existing network, or where a network can be added and supported easily, and where cabling each display is not an issue or problem
- Each MediaTile display / player integrates LAN support
- On-site networking (LAN/T1/DSL/Satellite) hardware and service is required
- On-site Router/Hub is required
- On-site cabling to each MediaTile display / player is required